

OPERATION & MAINTENANCE **MANUAL**

SURE **GRIP**®

Hydraulic Quick Coupler



This product manual must be left with the machine.
Each operator needs to have read and understood
this operation and maintenance manual before use.

Version 3.0 GLOBAL / 2025



Contents

INTRODUCTION		
Introduction		04
Message For The Owner		06
Warranty Policy		07
SAFETY		
Owner's Responsibility		12
Importance of Safety		14
Safety Standards		16
Safety Decals		17
Identification Labels		18
Risk Assessment		21
INSTALLATION		
Installation Checklist		22
Pre-Start Checklist		23
Installation to Machine		24
Plumbing Overview		25
Plumbing Circuit Diagram		26
Operating And Attaching		29
Connection Test		30
MAINTENANCE		
General Maintenance		32
Maintenance Schedule		33
Lifting Eye Inspection		34
Shackle Table		35
Daily/Weekly Checks		36
6 Monthly Base Wear Tolerance		38
Troubleshooting Guide		39
Parts Diagram		44

Safety Instructions

SAFETY ALERT

This SAFETY ALERT identifies important safety messages on the equipment and in the owner's manual. When you see this symbol, be alert to the possibility of personal injury and carefully read the message that follows.

WARNING

The signal word WARNING on the machine and in the manuals indicates a potentially hazardous situation which, if not avoided, could result in death or serious injury.

DANGER

The signal word DANGER on the machine and in the manuals indicates a hazardous situation which, if not avoided, will result in death or serious injury.

CAUTION

The signal word CAUTION on the machine and in the manuals indicates a potentially hazardous situation which, if not avoided, may result in minor or moderate injury. It may also be used to alert against unsafe practices.

IMPORTANT

The signal word IMPORTANT identifies procedures which must be followed to avoid damage to the machine.

Introduction

This manual contains important information about the installation, maintenance, connection and safe operation of your Sure-Grip Coupler.

You can assist in this proactive safety approach by ensuring that all persons involved with the fitting and operation of the Sure-Grip, read and understand these basic safety features and instructions.

ATTACH2 reserves the right of modification as a result of further technical developments with regard to the information and illustrations cited in this manual:

- ATTACH2 and its suppliers have sole copyright of this manual.
- The manual is intended solely for the use of the Sure-Grip.
- No part of this manual may be re-printed, translated or reproduced by any means without prior written permission from ATTACH2.
- Utilisation for the purposes of competition is forbidden.
- The Sure-Grip Coupler is designed for safe and dependable service if installed, maintained and operated correctly.

We request that time be devoted to the study of installation and maintenance requirements. Users are also expected to familiarise themselves with the correct operation and use of the Sure-Grip Coupler and its advised safety procedures.

! IMPORTANT !

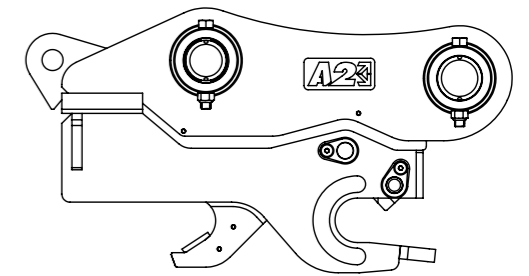
To comply with Occupational Safety and Health requirements, a record must be made of all repairs, adjustments and regular maintenance events involving your Sure-Grip Coupler.

SURE GRIP®

Hydraulic Quick Coupler

The non-tilting coupler that is built to last, day in day out.

The Attach2 Sure-Grip Coupler delivers fast, hands-free attachment changes with maximum safety and minimal maintenance. Designed for operators who need quick swaps without tilt functionality, it improves uptime, protects your crew, and handles multiple attachments with ease—all while staying in the cab.



3 YEAR WARRANTY

KEY BENEFITS



Increase Operator Safety – Reduces risk by allowing the operator to stay in the cab during attachment changes.



Fast Attachment Changeovers – Quicker swaps mean less downtime and more productivity every day.



Cost-Effective Coupler Option – A greaseless, low-maintenance solution when tilt isn't needed—ideal for basic machine setups.



Simple Operation – Single Cycle Operation with no manual locks or pin removal.



Low Maintenance – Less wear and reduced servicing requirements with only 3 moving parts.



Universal Attachment Compatibility – Swap buckets, rippers, grabs and more—one coupler handles it all.

Message For The Owner

As the new owner and/or operator of the Sure-Grip we would recommend that you take the time to read this Operation Manual carefully before commencing work.

FOLLOW THE SAFETY INSTRUCTIONS:

- › Carefully read all the safety information contained in this manual.
- › Make sure all warning signs are securely fitted.
- › Immediately replace any signs that are missing or damaged.
- › Before starting work make sure you are familiar with the equipment and where necessary, with the machine and its control devices.

INFORMATION FOR THE USER:

The user of the Sure-Grip is obliged to ensure that the equipment is always in safe working order in accordance with accident prevention regulations, Occupational Safety and Health regulations or any other official instructions.

WARRANTY:

ATTACH2 extends its warranty policy from twelve months to three years or 3000 machine hours (whichever comes first).

In order to qualify for the full three year warranty, customers must submit a Warranty Submission Form which can be found in our warranty book or on our website: www.attach2.co.nz

Should a Warranty Submission Form upon purchase not be submitted, the standard 12 month warranty period will apply.

- › The extended guarantee assumes proper operation and use as intended but will be nullified as a result of:
- › Repairs or other intervention not undertaken by persons authorised by ATTACH2.

With use of accessories or replacement parts not approved by ATTACH2 or which are not original replacement parts supplied by ATTACH2.

After the warranty period has expired, we highly recommend the use of original replacement parts and manufacturer's replacement parts approved by ATTACH2.

Warranty Policy

We want your experience with our products to be nothing short of exceptional. If you ever encounter any challenges with our products, please contact your dedicated support team.

WARRANTY PERIOD

Our warranty period reflects our confidence in the durability and reliability of our products, underscoring our commitment to your investment in quality machinery.

As such, Attach2 offers a 3-year or 3000 hours (whichever comes first) limited warranty on all our products. Of course, not all damage to our products is covered by this warranty and should be read in conjunction with our Terms and Conditions. For your convenience, we have created a quick guide on what is and isn't covered below.

OUR COMMITMENT TO YOU

We take immense pride in assuring that our product is crafted with precision and care. Our warranty promises that, throughout the Warranty Period, our product will perform to the highest industry standards, if used in accordance with the guidelines in our product manuals.

Should any issue arise due to defective workmanship or materials, rest assured – we're here for you. We will swiftly repair or replace the product, utilising brand new or re-manufactured parts.

At Attach2, our guiding principle is straightforward: if something isn't right and we're aware of it, we'll be upfront and offer our full support without hesitation.

This approach is ingrained in our DNA, shaped by three generations of experience in the Earthmoving industry.

Our expertise extends beyond attachments; we also have extensive knowledge in excavator operations and ownership.

BE REALISTIC, NOT EVERYTHING IS COVERED

Whilst we stand by our product, it's important to know that certain exclusions apply, such as improper use, accidental damage, or cosmetic wear.

Our technicians assess all warranty claims to determine what is ultimately applicable, but for your convenience, these exclusions have been outlined in the quick reference table to the right.

It's important to note that incorrect use of the product is an automatic exclusion, don't worry though our technicians are experts in their field and can discern when the product has been used correctly.

REPAIRS

Let's chat about repairs. We prefer handling them ourselves, but if that's not possible, we've got a bunch of reliable service providers who can step in. If, as a last resort, a third party has to do the job, we just need a quick sign-off on their quote before they get to work, making sure it fits our expectations.

If a repair is needed, we've got your back. Any replaced parts and workmanship are covered by our warranty for the remaining period, or a minimum of 3 months.

Our warranty is only for new products. If you're eyeing off second-hand gear, you've had your chance to check it out. If you're okay with it, it's a "take it as it is" deal. There is no warranty on quality or suitability.

Just to be crystal clear, we're not on the hook for any loss or damage caused by the equipment, its bits, or anything else in the mix. That includes things like lost profits, business,

revenue, goodwill, consequential loss, downtime, other property damage and other such things.

PRODUCT REGISTRATION

Registration is not just a formality; it's a commitment to providing you with the best support. Registering your product ensures smoother claims processing and provides a handy record for insurance purposes, should this be required.

Register your product here

USA: www.attach2.com/us/warranty

NZ: www.attach2.com/nz/warranty

AU: www.attach2.com/au/warranty

How Do I Make A Claim?

We are committed to providing efficient and effective support throughout the warranty process to ensure your satisfaction and the continued performance of your equipment.

STEP 1:

Option A - Let us help you:

Contact our support team at 0800 100 683 (NZ), 1800 095 689 (AU), +1 (952) 900-5401 (US) Or via email at sales@attach2.com.

Please provide detailed information including the machine make and model, attachment serial number, and a description of the issue.

Option B - Self-service:

Visit our website as below to make a claim. You will be prompted to provide the machine make and model, attachment serial number, and a description of the issue.

USA: www.attach2.com/us/warranty

NZ: www.attach2.com/nz/warranty

AU: www.attach2.com/au/warranty

STEP 2:

Our Attach2 Aftersales team will promptly communicate with you to assist in diagnosing the issue. In some cases, immediate resolution may be possible, and we will do our best to confirm whether the issue is covered under warranty at this stage.

STEP 3:

We will determine the most effective resolution for the issue, taking into account factors such as timing, repair or replacement options, and cost. Our priority is to ensure minimal downtime and optimal functionality of your machine.

STEP 4:

The agreed-upon resolution method will be implemented. Our preference is for Attach2 Technicians to handle the resolution, although in some cases, an OEM technician or approved third-party technician may be involved, subject to Attach2 approval.

STEP 5:

Upon completion of the resolution process, the cost of repair, application, or warranty coverage (or rejection) will be determined, and the case will be officially closed.

Your Personal Information and Privacy

Your privacy matters. Your personal information is used exclusively for your benefit – enhancing customer service, administering warranties, and crafting even better products. We may share it with related companies, ensuring that every step aligns with your interests.

Your consent to receiving direct marketing materials is entirely in your hands, and you can opt-out anytime.

Thank you for being part of the Attach2 team. Your trust fuels our commitment to delivering reliable products and outstanding service.

Best Regards,

The Attach2 Team



IMPORTANT

In the event that a structural component fails, use of the product must cease immediately to prevent further damage to the remaining parts.

Warranty Policy

Primary Symptom	Attach2 will Provide Coverage:	Attach2 will not Provide Coverage:
Hydraulic Oil Leak/ Failure	Where hydraulic seals have been damaged as a result of weld process or assembly process	<ul style="list-style-type: none"> Where loose fittings are evident (This is checked at the Pre Delivery inspection for the machine fitment, and is also part of the regular maintenance checks) Where Actuator rear hub fasteners are loose (This is checked at the Pre Delivery Inspection for the machine fitment, and is also part of the regular maintenance checks) Where evidence of foreign contamination is found Where seals have deformed / melted as a result of oil temperature exceeding 100 degrees Where there is evidence of either high/excess pressures or high/excess flow rates outside of the specified values (Please refer to user manual)
	Where there is evidence of seals incorrectly assembled	
Weld Failure	Where there is evidence of porosity	Where the weld and fillets meets Attach2 engineering design and procedure standards
	Where there is evidence of cold lap or a lack of penetration	
	Where the weld fillet is less than Attach2 engineering design and procedure standards	
Fastener Failure	Where the fastener is incorrectly torqued during the assembly process	<ul style="list-style-type: none"> Where any breakage occurs after 1000 hours of operation Where a loose fastener is found after 100 hours of operation If the fastener is as per the Attach2 engineering design specification If Fastener Checks have not been undertaken as per the requirements in the Operators Manual
	Where a defect in the fastener is evident	
Hydraulic Hose or Fitting Failure	Where the fitting specifications are outside of Attach2 engineering design standards	<ul style="list-style-type: none"> Where the fitting is supplied and/or installed outside of Attach2 Where problems associated with Hydraulic hose or fittings are evident after attachment installation, regardless of cause. (This is checked at the pre-delivery inspection for the machine fitment, and is also part of the regular maintenance checks) Where there are signs of external force or impact
Bucket Tooth or Adaptor Failure (GET)	Where there is clear evidence of a casting defect	<ul style="list-style-type: none"> Where there is evidence of post manufacturing heat Where there is evidence of force in a direction contrary to OEM design
	Where the material properties are outside of Attach2 engineering design standards	
Premature Wear (Pins and Bushes)	Where there is evidence of such wear beyond Attach2's engineering design standards	<ul style="list-style-type: none"> Where there is evidence of a lack of lubrication or a lack of maintenance Where incorrect pins/pin centers are evident Where use of an incompatible attachment is evident
Product Fitment/ Attachments	Where the product varies from the order confirmation or invoice	<ul style="list-style-type: none"> Where the use of a manual pulveriser (leverage type) or an attachment that is specified for a larger machine is evident Where the product was supplied according to the order confirmation or invoice
Damaged Goods on Receipt	Where Attach2's freight provider is used	<ul style="list-style-type: none"> Where the customer has used their own freight provider
Product not taking Grease	Where evidence of the product not taking grease has been provided to Attach2 during the Pre Delivery Inspection	<ul style="list-style-type: none"> Where evidence of the product not taking grease is found after the Pre Delivery Inspection Where an auto greasing system has been fitted to the attachment
Hydraulic Contamination	Where the origin of the contaminant is clearly identifiable as being from an Attach2 part	<ul style="list-style-type: none"> Where the attachment has been plumbed or connected outside of Attach2's recommended hydraulic standards
Cylinder Failure	Where the cylinder has not been manufactured to Attach2's engineering design standards	<ul style="list-style-type: none"> Where the cylinder is damaged as a result of pressure spikes or contamination Where there are signs of external force or impact Where the hydraulic oil pressure exceeds the specifications
Material Failure	Where the material does not meet Attach2's engineering design specification standards	<ul style="list-style-type: none"> Where there are indications of misuse or improper application beyond the intended design and marketing of the product

Owner's Responsibility

Operate and maintain this machine in a safe manner and in accordance with all applicable local, state, and federal codes, regulations and/or laws; and in compliance with on-product labeling and this owner's manual instructions.

Make sure that all personnel have read this owner's manual, and thoroughly understand safe and correct installation, operation, and maintenance procedures.

Give operating instructions to the operators before allowing them to operate the machine, and at least annually thereafter.

IMPORTANT

SAFE OPERATION NEEDS A QUALIFIED OPERATOR.

WARNING

AVOID SERIOUS INJURY OR DEATH

Operators must receive instructions before operating the machine. Untrained operators can cause serious injury or death. For an operator to be qualified, he or she must not use drugs or alcoholic drinks which impair alertness or coordination while working. An operator who is taking prescription drugs must get medical advice to determine if he or she can safely operate a machine and the equipment.

Importance of Safety

Read and follow instructions in this manual and the machine's Operator's Manual before operating.

- The excavator attachment is intended for use in excavation. Use of this equipment in any other manner is considered to be contrary to the intended use of the attachment.
- Under no circumstances should young children be allowed to work with this equipment.
- This equipment is dangerous to persons unfamiliar with its operation.
- Check for overhead and / or underground lines before operating equipment (if applicable).
- In addition to the design and configuration of equipment, hazard control and accident prevention are dependent upon the awareness, concern, prudence, and proper training of personnel involved in the operation, transport, maintenance, and storage of equipment.
- Check that the attachment is securely fastened to the machine.
- Make sure all the machine controls are in NEUTRAL before starting the machine.
- Operate the equipment only from the operator's position.
- Operate the equipment according to the Operator's Manual.
- When learning to operate the equipment, do it at a slow rate in an area clear of bystanders.
- DO NOT permit personnel to be in the work area when operating the equipment.
- The equipment must be used ONLY on approved machines.
- DO NOT modify the equipment in any way. Unauthorized modification may impair the function and / or safety and could affect the life of the equipment.
- DO NOT make any adjustments or repairs on the equipment while the machine is running.
- Keep shields and guards in place. Replace if damaged.
- DO NOT operate equipment in poor visibility conditions such as fog, darkness, or any conditions that limit clear visibility less than 300 feet (100 m) in front of and to the sides of the equipment.
- DO NOT operate in a work area that has not been inspected for foreign debris and obstacles.
- Remove any foreign objects and clearly mark any objects that cannot be removed.
- Wear safety glasses, gloves, hard hat, hearing protection, and other protective clothing when operating or maintaining this equipment.

Importance of Safety

Fire Prevention Safety

• All fuels, most lubricants, and some coolant mixtures are flammable. Flammable fluids that are leaking or spilled onto hot surfaces or onto electrical components can cause a fire.

Transporting Safety

• Comply with state and local laws governing highway safety and movement of machinery on public roads.

• Check local laws for all highway lighting and marking requirements.

• Always yield to oncoming traffic and move to the side of the road so any following traffic may pass.

• Never allow riders on either machine or equipment.

• If transporting the attachment on a truck or trailer, make sure it is properly secured to the transport vehicle.

Hydraulic Safety

• Always disconnect hydraulic connections between the machine and the attachment before performing maintenance to the unit.

• Always clean fluid spills. Do not use gasoline or diesel fuel for cleaning parts. Use commercial nonflammable solvents.

• Check hydraulic tubes, hoses, and fittings for damage and leakage. Never use open flame or bare skin to check for leaks. Hydraulic tubes and hoses must be properly routed and have adequate support and secure clamps. Tighten or replace any parts that show leakage.

WARNING

LEAKING FLUIDS UNDER PRESSURE CAN ENTER THE SKIN AND CAUSE SERIOUS INJURY OR DEATH.

Immediate medical attention is required. Wear goggles. Use cardboard to check for leaks.

Important Safety Instructions

Attach2 supplies a standard Sure-Grip Coupler to fit Attach2 approved attachments. However, when fitting a non-standard attachment, check that the operation fitting guide for the attachment's pin range and width to suit the Sure-Grip Coupler model.

It is your responsibility to observe pertinent laws and regulations and follow ATTACH2's instructions for operation and maintenance.

WARNING

IMPROPER OPERATION OF THE SURE-GRIP COUPLER CAN CAUSE INJURY OR DEATH. Before using this product make certain that every operator understands the following points.

- › Is instructed in safe and proper use of the attachment.
- › Reads and understands the manual pertaining to the attachment.
- › Reads and understands all safety decals and tags on the machine.
- › Clears the area of all other persons.
- › Learns and practises safely using attachment controls in a safe, clear area before operating this machine on a job site.

IMPORTANT

The Sure-Grip Coupler base has a maximum and minimum pin centre range. Please refer to the Identification Labels section for more information.

Safety Standards



FULLY COMPLIANT



The Sure-Grip is fully compliant with the following Standards, AS4772-2008 and NSW Work-cover WC01783. EN474-5 Standards and ISO 13031 International Standard in all aspects*

The onus falls on the installer regarding the engagement/disengagement function to ensure:

(ii) The acoustic signal shall be in continuous operation when the disengaging function is activated.

(iii) Neither unlocking or disengagement shall be possible if the electrical signal for the acoustic signal device fails e.g. by cable failure/disconnection.

(iv) The acoustic signal operation shall be activated automatically at every engine start to allow verification of signal to the operator.

ISO Requires - slide pick ups and pin sizes for all ranges and recommended bucket widths.

! IMPORTANT !

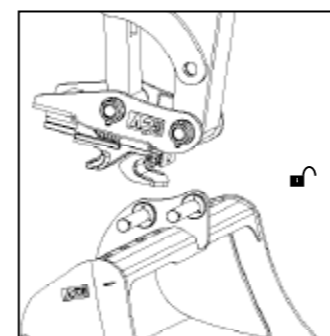
For attachments supplied to or manufactured in countries other than New Zealand and Australia, the rules for prevention of accidents and safety regulations for the respective country must be strictly adhered to.

Safety Decals

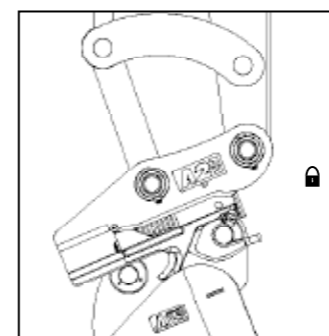
! IMPORTANT !

The Sure-Grip Coupler is supplied with safety decals which are to be fitted inside the cab in clear view of the operator to identify correct operation of the Sure-Grip.

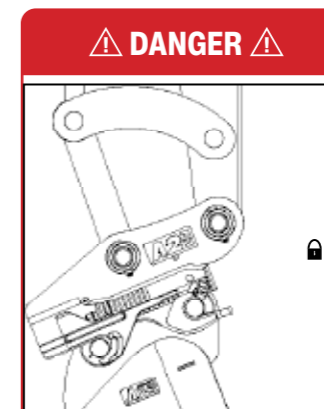
ATTACHMENT PICK UP



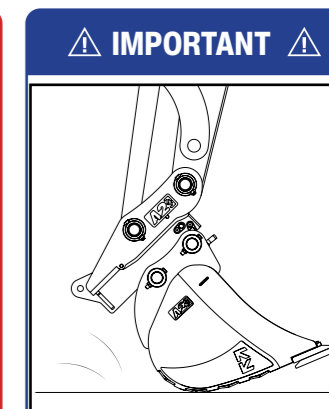
STEP 1
Disengage quick coupler (Buzzer on). With sliding jaw retracted engage Coupler onto front pin.



STEP 2
Crowd onto rear pin; front pin now secured.

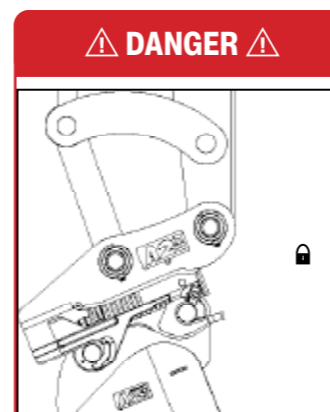


STEP 3
Engage quick coupler, jaw will slide onto rear pin which engages front safety latch; Bucket now secured.

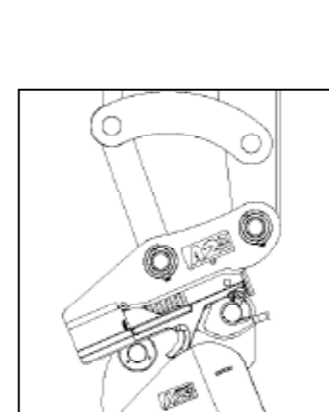


STEP 4
Put pressure on the bucket tip to ensure fitment is secure and tight.

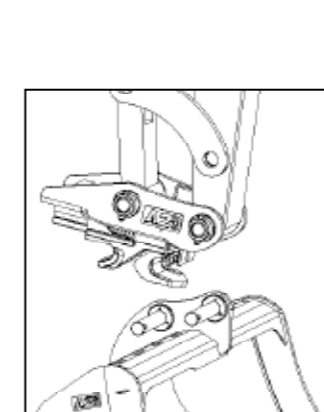
ATTACHMENT RELEASE



STEP 1
Place Attachment on flat ground.



STEP 2
Disengage quick coupler (buzzer on), retract slide jaw and crowd off the rear pin.



STEP 3
Front safety latch will disengage. Lift coupler away from attachment.

! SAFETY ALERT !

Visually check front Latch is down. Crowd Bucket to visually see rear slide is wedged on to rear in. Physically push Attachment against ground and away from machine to confirm engagement is complete.

Identification Labels

All Sure-Grip Couplers are supplied with an Identification Label as shown below.

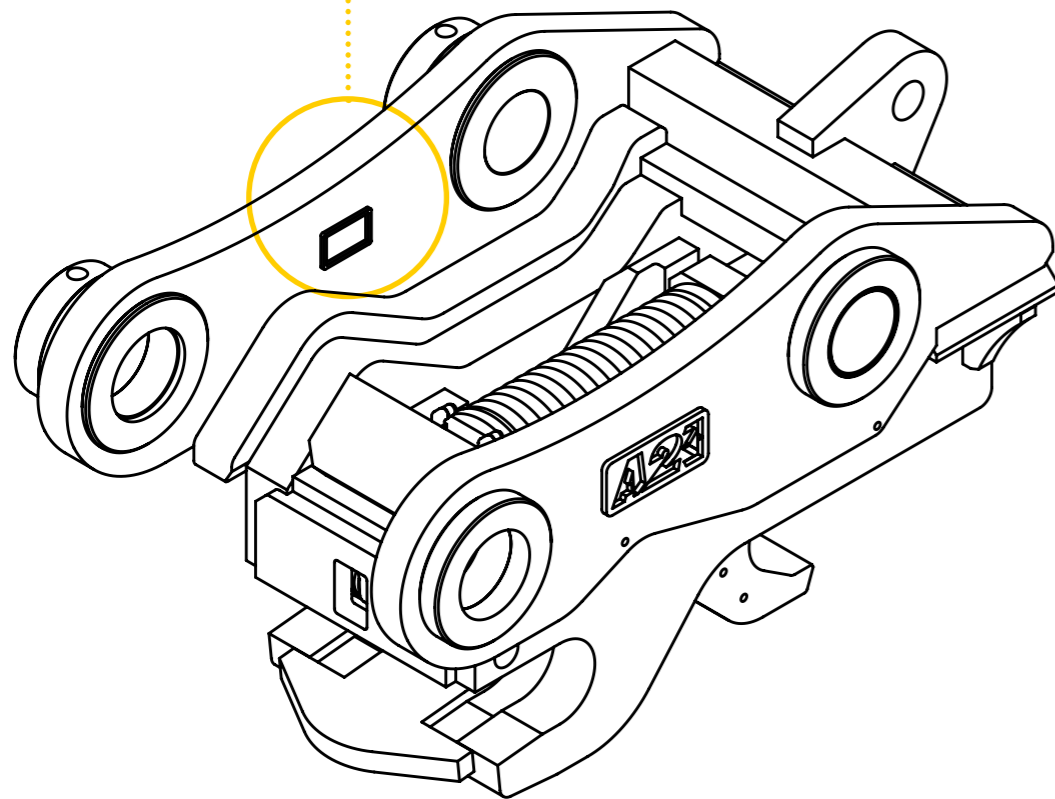
MACHINE MAKE & MODEL		
ATTACHMENT DESCRIPTION		
PART NO.		A2 SERIAL #
REF. NO.		
ATTACHMENT NET MASS (kg)		ACTUATOR
LIFTING EYE CAPACITY (kg)		
MAX / MIN PRESSURE (psi)		BUILD DATE
PIN CENTRE RANGE (mm)	MIN	MAX
Manufactured by www.attach2.com		
FULLY COMPLIANT: AS4772-2008 / ISO 13031 / NSW WC01783		

EACH IDENTIFICATION LABEL DISPLAYS THE FOLLOWING;

- Machine make
- Model
- Manufacturer date
- Attachment weight
- Pickup pin size
- Part number
- Lifting Eye Capacity
- Serial number
- The pin centre range to suit the Sure-Grip.

The pin centre range displays the minimum and maximum travel distance for the Sure-Grip slide.

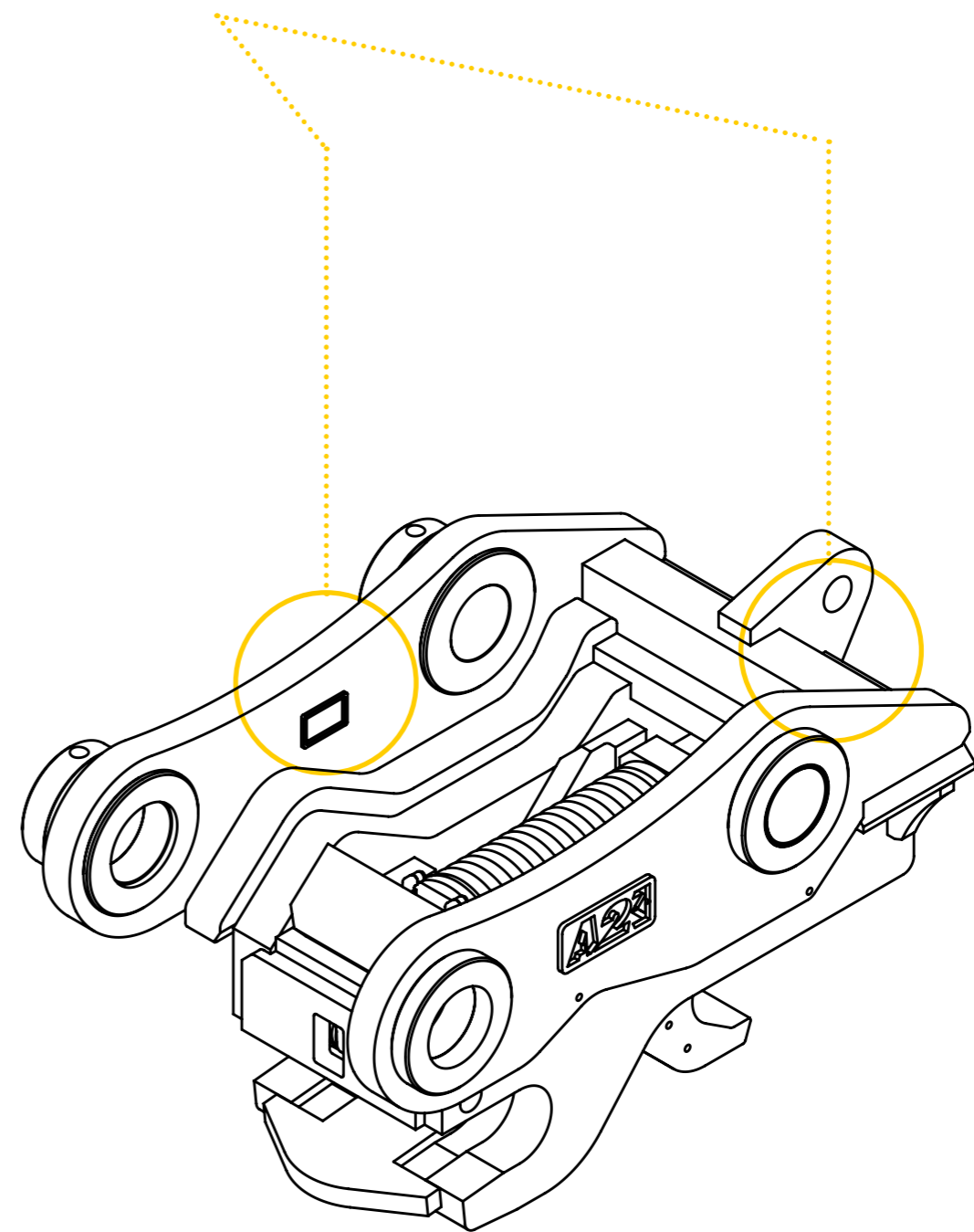
It is recommended that a copy of these details be kept in office for reference.



W.L.L - Working Load Limit

The Sure-Grip Coupler comes with an integrally designed Lifting Eye which has been designed to meet and exceed current standards.*

W.L.L is stamped on both the Sure-Grip serial plate and also clearly marked adjacent to the lifting eye as per ISO. Stamping shows the W.L.L e.g. XXXXKG



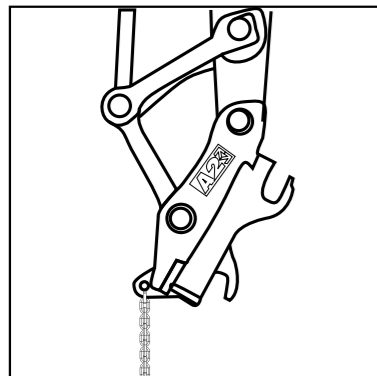
Lifting Eye

The lifting eye must be used accordingly to the following guidelines:

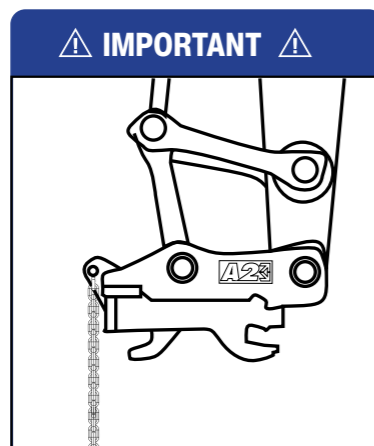
- Only use the Lifting Eye at the rear of the Sure-Grip for lifting.
- Do not lift with a bucket or any other attachment fitted to the Sure-Grip.
- Ensure that the load to be lifted does not exceed the rated W.L.L of the Sure-Grip and Lifting Eye.
- The Lifting Eye is to be used with certified Lifting Shackle with the same or greater safe working load.
- Lifting must be carried out with the Sure-Grip in a vertical plane so that the load can hang freely without interfering with the Sure-Grip body.
- It is recommended that Lifting Eye and Shackle must be visually inspected daily for defects and wear.
- During normal operation, it is not recommended to keep lifting devices attached to the lifting eye.

⚠ WARNING ⚠

- › Use in a safe proper manner at all times.
- › Report damage or malfunctions immediately.
- › Do not exceed rated lift capacity of the machine.
- › Do not use if damage or malfunction has occurred.
- › Only lift from lifting eye.
- › Do not exceed lifting eye capacity on name plate.



DO
Lift in vertical plane ONLY
shackle MUST hang freely.



DO NOT
Do not lift if the chain and
shackle interfere with
coupler.

Risk Assessment

Location: _____ Date: _____ Ref no: _____

Hazards Identified

- Work Equipment
- Ergonomics
- Entanglement
- Crushing
- Environmental
- Lifting Devices
- Plant Movement
- Fumes
- Vibration
- Access / Exit
- Slip, Trip and Fall
- Warning Devices on Equipment
- Noise

People Affected	Yes	No	N/A
Involved in Activity			
Close to Activity			
Everyone on Site			
Members of the Public			

Expected Precautions	Yes	No	N/A
Has the operator been adequately trained on how to use the Sure-Grip in general?			
Is the operator competent in using the specific attachment on the machine?			
Is there a system for checking that the attachment pins are in place on the Sure-Grip prior to work starting every time a different attachment is fitted?			
Is the operator aware that they must not operate the machine unless they are satisfied that the Sure-Grip is secured in place.			
Does the view of the operator from inside of the cab allow them to visually see that the Sure-Grip is secured in place?			
Does the Sure-Grip have the approved labels stating and referring to attachment specifications?			
Is there a risk assessment for the Sure-Grip detachment?			
Are there cab instructions for the Sure-Grip?			

Personal Protective Equipment

Hard Hat	High Visibility Vest	Safety Boots	Gloves
Ear Protection	Safety Glasses	Other	

Management

Assessed by:		Reported to:	
Name:	Date:	Name:	Date:

Installation Checklist

Customer Details / End User			
Installation Date:		Customer:	
Landline:		Mobile:	
Company Name:		Email:	
Address:			

ATTACH2 Product Details			
Description:		ATTACH2 Serial Number:	
Purchase Date:		Installation Date:	

Company Completing Installation			
Company:		Installer Name:	
Landline:		Mobile:	
Machine Maker:		Machine Model:	
Email:			

Installation Inspection		✓ Compliant	✗ Not Yet Compliant
CHECKS	✓	✗	CHECKS
Verify all hose installations are as per manual and free to move through the hitches designed full movement without hose issues.			Verify installation completed as per the manuals installation plumbing circuit diagram.
Shimming of the hitch pins complete.			Verify hydraulic system is bled and free from the air.
			Verify system pressures and flows for the: Tilting circuit pressure is set to: PSI Tilting flow rate set to: LPM Tilting cycle time LHS to RHS: Seconds
Verify all hydraulic fittings are undamaged and free from leakages under operating pressure.			Verify all attachments are for use with the hitch attach and detach without operation issues or contact with machine.
INSTALLATION SIGN OFF			
Was the installation complete with proportional solenoid valves?			Was the installation complete with double P/O check valves?
Is the hitch compliant at time of installation?			Are any follow ups required to make hitch complaint?
Installation time/date:			Signature:

Pre-Start Checklist

Operators Name:		ATTACH2 Model:	
ATTACH2 Serial No:		Date:	

In Cab	M	T	W	T	F	S	S
Are the Sure-Grip operating controls serviceable?							
Are the operating & maintenance manuals in the cabin?							

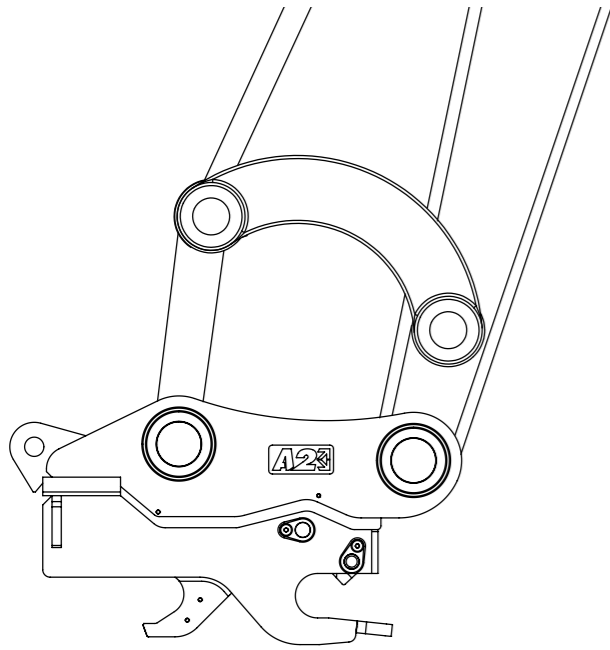
Hydraulic System	M	T	W	T	F	S	S
Check wear or damage to hoses or fittings.							
Check hoses are free from pinch points.							
Check for visible Hydraulic leaks.							

Sure-Grip	M	T	W	T	F	S	S
Check wear and damage to hitch / attachment pins and retainers.							
Check security of mounting pins, locking bolts and nuts.							
Is the attachment safe to use? Yes or No.							

Lubrication	M	T	W	T	F	S	S
Greasing as per ATTACH2 manual.							

Operator:		Manager Signature:	
-----------	--	--------------------	--

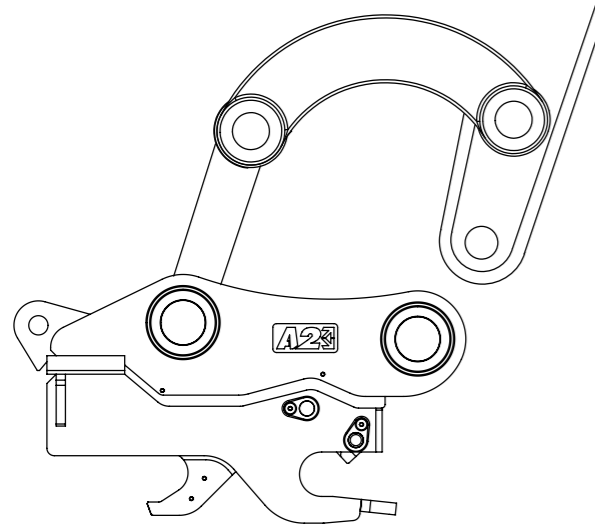
Installation to Machine



- Align Sure-Grip to the H-Link and insert the pin.
- Fit shims and O-Rings as required.

⚠ CAUTION ⚠

Check to confirm that the pins Are Original Equipment Manufacturers Pins.



⚠ IMPORTANT ⚠

- Align Sure-Grip to the dipper arm and insert the pin.
- Fit shims and O-Rings as required.
- Fit retaining bolts as per the OEM manual.

⚠ WARNING ⚠

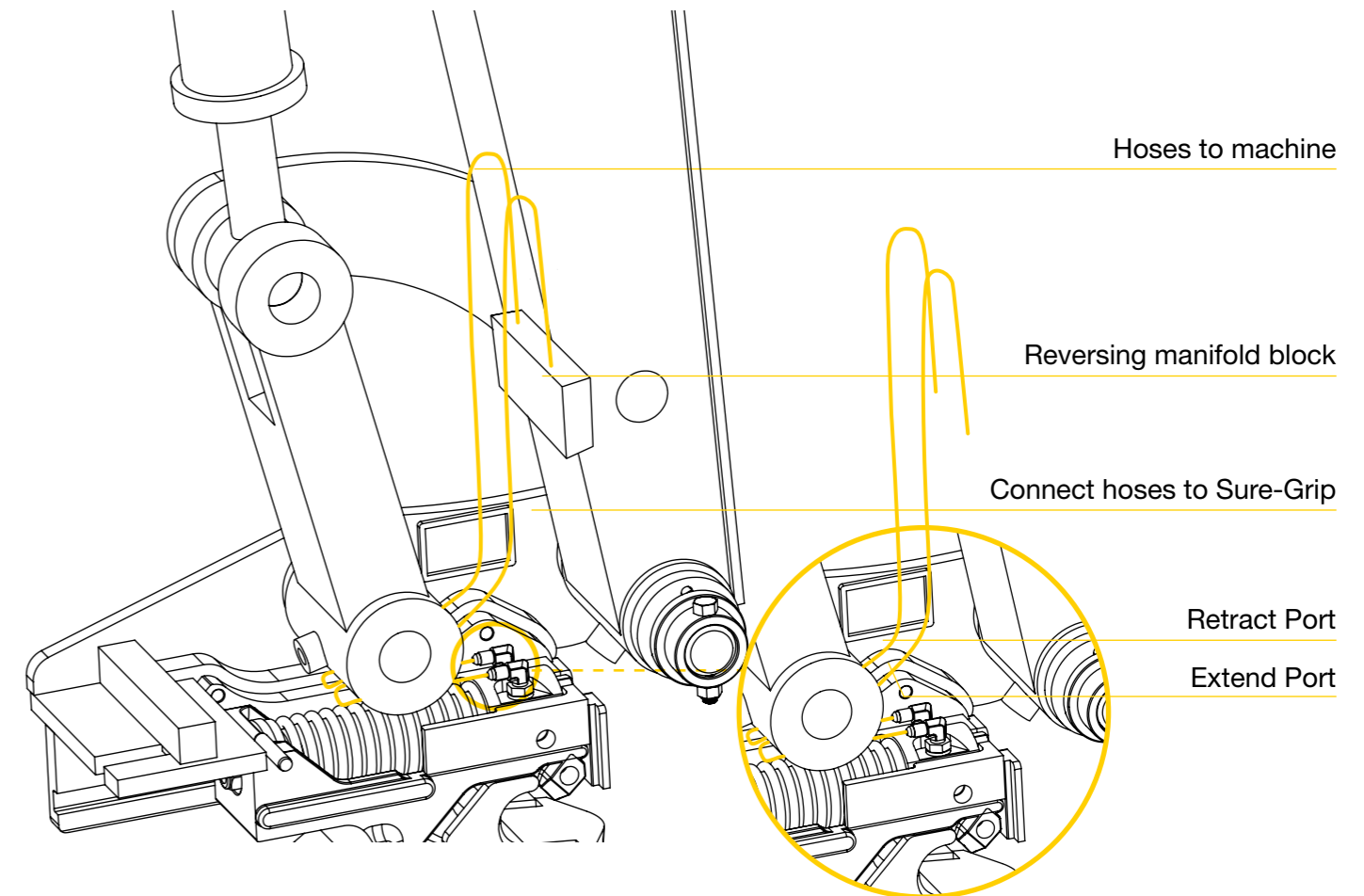
Check Pins Are Original Equipment Manufacturers Pins.

Plumbing Overview

ATTACH2 suggests using a reversing manifold block mounted to the dipper arm for plumbing the Sure-Grip to the machine.

This should be carried out by a professional and experienced hydraulics installer.

If you require advice on a preferred hydraulic installer, please contact your local ATTACH2 Service Department on; AUS: +61 7 3557 2654 / NZ: +64 6 929 7592 / USA: +1 (952) 900-5401

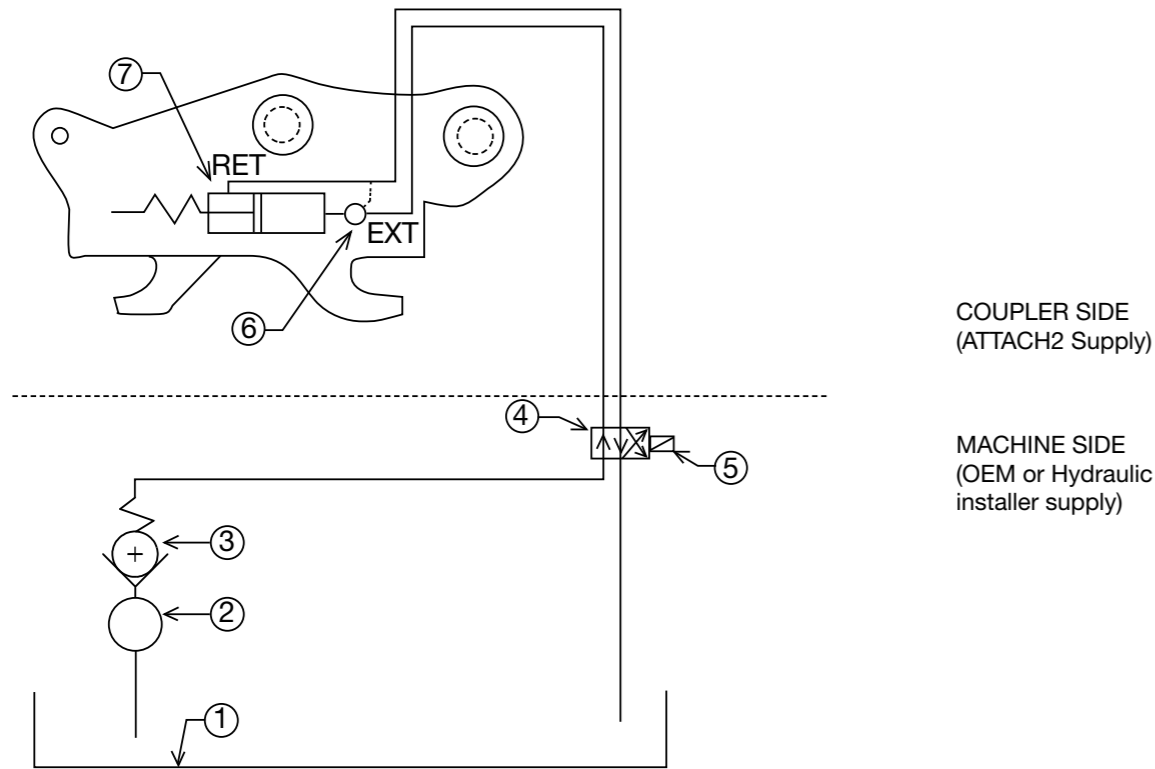


⚠ IMPORTANT ⚠

WHEN PLUMBING THE Sure-Grip ONTO MACHINE:

- Disconnect battery prior to any welding - failure to do so can result in damage to machine electronics.
 - Protect hydraulic cylinder rods from weld spatter.
- Ensure that the connecting hoses will not be pinched or damaged through the entire tilting range.

Plumbing Circuit Diagram



DESCRIPTION	
1	Oil Reservoir
2	Machine High Pressure Pump
3	In-Line Check Valve (Recommended to fit)
4	Single Acting Solenoid
5	Connect Solenoid to Buzzer/Alarm
6	Pilot Operated Check Valve
7	Coupler Cylinder

Hydraulic Requirements & Plumbing

SURE-GRIP COUPLER CIRCUIT REQUIREMENTS

Operating Pressure*	Standard Hyd set up: Minimum 2800PSI
	Low Pressure set up: Minimum 420PSI
Hoses /Tube Size	1/4" maximum up to and including 20T
	3/8" Maximum 35T and over
Port connecting (ATTACH2 supplied)	7/16" JIC Male
	9/16" JIC Male 35T and over

*The onus falls on the installer regarding the machine controls set up.

! WARNING !

Ensure that the correct PSI hoses are being used in the application and are rated to match the appropriate machine ratings.

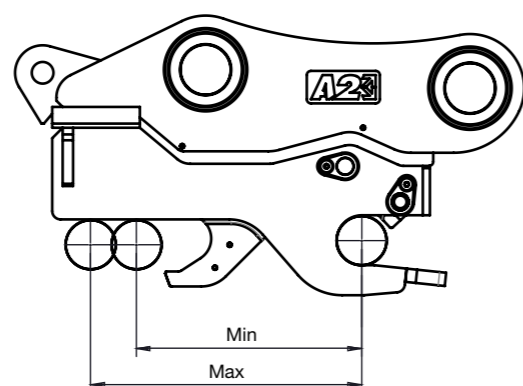
Checking Attachments

! WARNING !

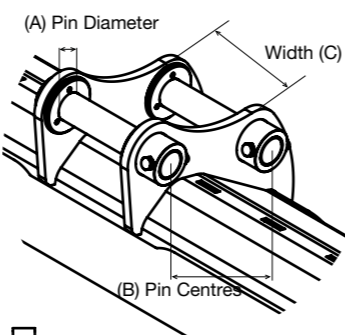
Ensure attachments being picked up suit the build Information on the Sure-Grip Identification Label.

Identification Label will indicate Pin Centre Range (Minimum - Maximum)

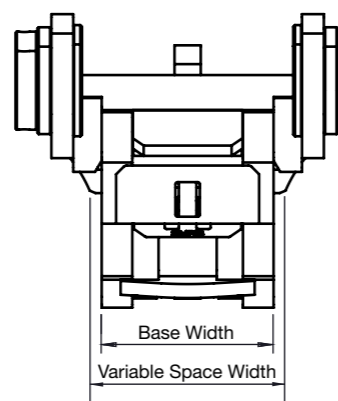
A Check that each individual attachment pin centre fits the Sure-Grip by confirming the range on the label.



B Check the inner width of the Sure-Grip. Width must be wider than the Sure-Grip base.



C Check pin spacers can be fitted to either the base of the Sure-Grip or between the inner side of the ears and the bosses of attachment.



! IMPORTANT !

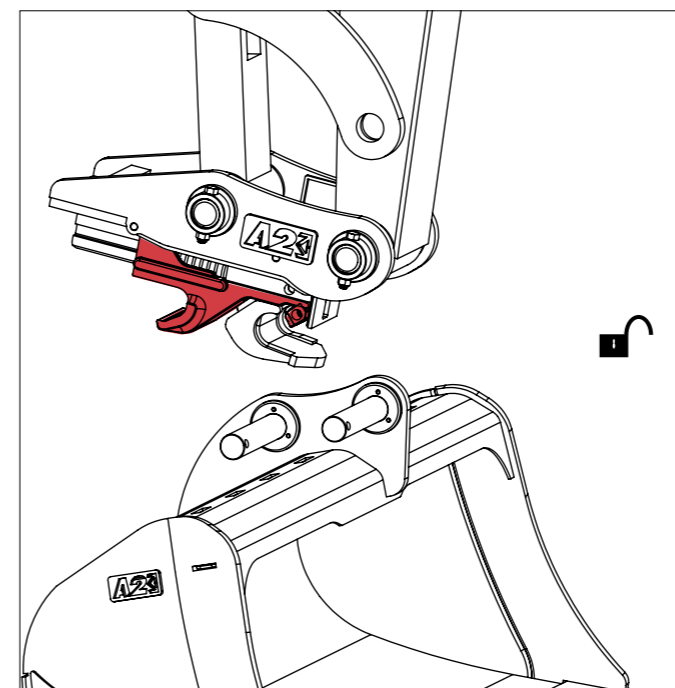
It is highly recommended to fit spacers in the case of heavier applications, particularly on machines that are 14 tonne and above.

! DANGER !

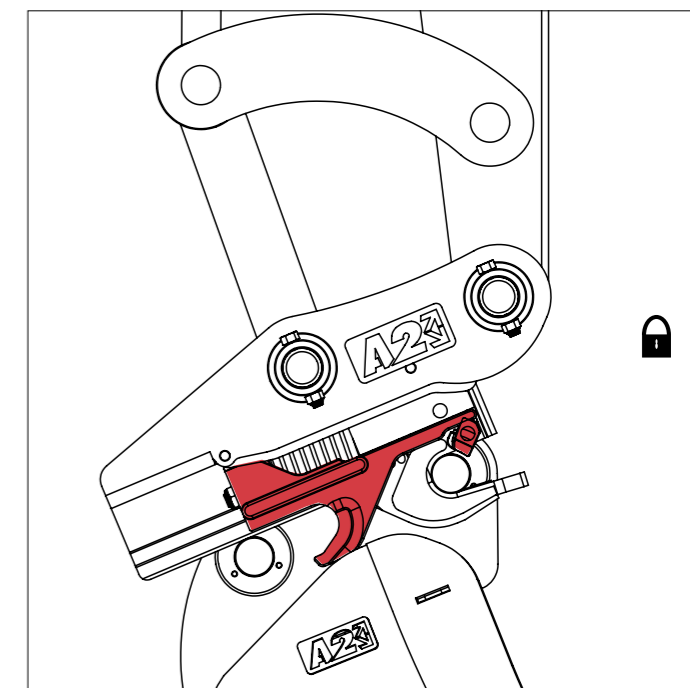
Do not use any Attachment unless all Safety Functions are Serviceable and within Specifications.

Operating and Attaching

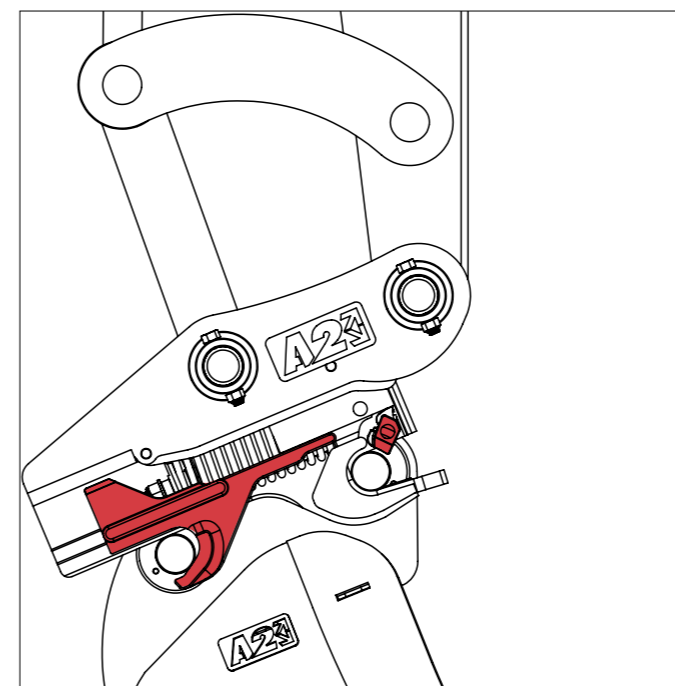
The connection and disconnection process of our latest quick hitch, the Attach2 Sure-Grip coupler is a simple and efficient process.



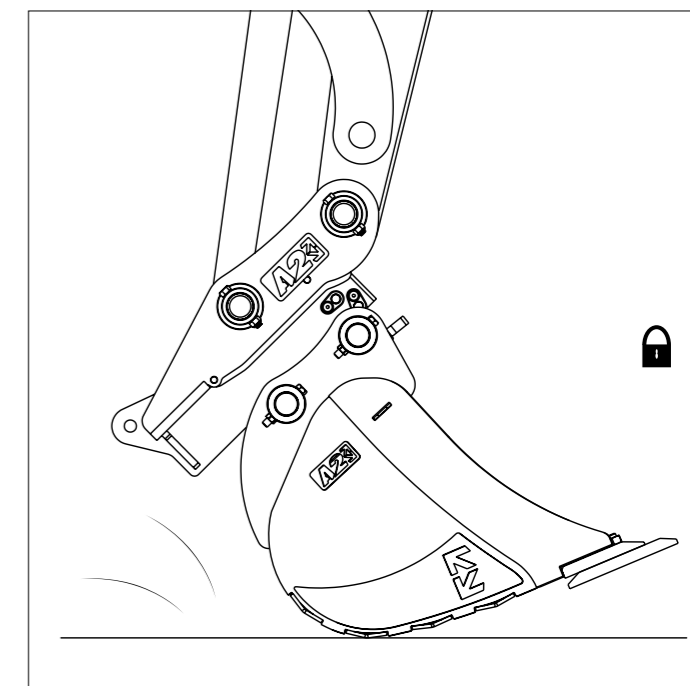
STEP 1
Activate switch. With slide retracted engage coupler onto front pin.



STEP 2
Deactivate switch. Crowd onto rear pin; front pin now secured.



STEP 3
Extend slide onto rear pin which engages front safety latch; Bucket now secured.



STEP 4
Put pressure on the bucket tip to ensure fitment is secure and tight. *Refer to pg 8, to release attachments.

Connection Test

! IMPORTANT !

- › Check all attachments fit correctly. The safety latch is designed to work in a closed position on the front pin. If the safety latch is not closed when attached to any attachment, check the rear jaw of the Sure-Grip base is engaged with the rear pin.

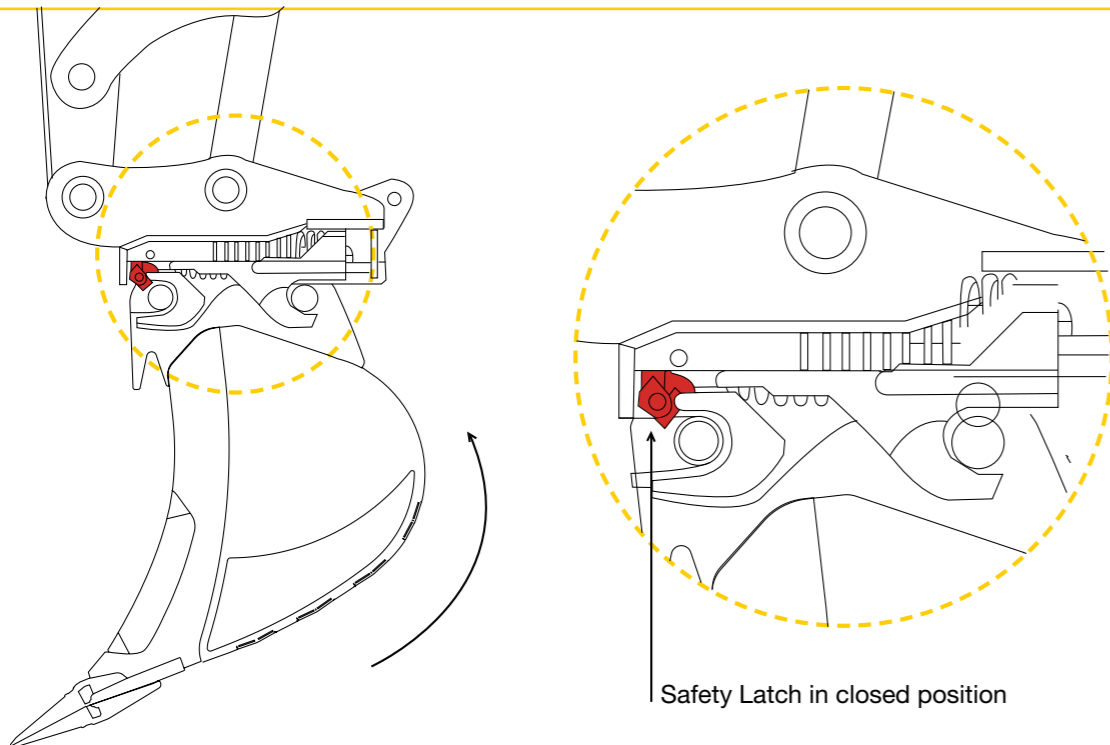
! WARNING !

- › If uncertain, DO NOT USE THIS ATTACHMENT. Please refer to 'Checking Attachments' on Page 18 or alternatively, please contact your local ATTACH2 Service Department.

! WARNING !

SAFETY LATCH IN CLOSED POSITION

- › To ensure the Sure-Grip Coupler base has engaged securely to pins on attachment:
- › Visually check the safety latch is engaged on the pin.
- › Test before operating by applying pressure to attachment by rotating against the ground and away from machine.
- › Do not proceed with work unless the safety latch is in the closed position on the front pin (see below).
- › If the safety latch on the front pin is open DO NOT OPERATE THE SURE-GRIP. Please contact your local ATTACH2 Service department immediately on:
AUS: +61 7 3557 2654 / NZ: +64 6 929 7592 / USA: +1 (952) 900-5401



Safety Latch Inspections

! IMPORTANT !

- › Manual inspection of the front safety latch must be carried out to ensure the safety latch movement is within acceptable safety tolerances as specified below. This is in addition to a daily visual check of the safety latch and usual wear and tear assessments.
- › The maximum opening distance should be measured and compared to the safe allowable variation table.
- › If the maximum opening distance is LESS than the maximum allowable opening distance for the Sure-Grip model, it is safe to use.

FRONT SAFETY LATCH MEASUREMENT

- › Slide must be extended to lock safety latch
- › Measure gap as shown

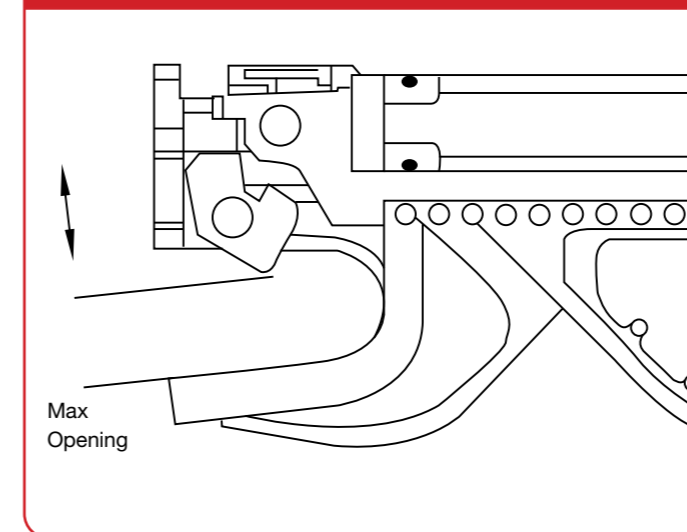
MAXIMUM OPENING DISTANCE

- › If the maximum opening distance is greater than the maximum allowable opening value for that Sure-Grip base, do not use the Coupler. Please contact your local ATTACH2 Service department immediately on:
AUS: +61 7 35572654 / NZ: +64 6 929 7592 / USA: +1 800 905 2265

SAFE VARIATION TABLE

PIN	MAX OPENING
30	27
35	32
40	36
45	41
50	45
55	50
60	54
65	59
70	63
80	72
90	81
100	90
110	99
120	108

! DANGER !



Maintenance

GENERAL MAINTENANCE

All maintenance is to be performed by a qualified and competent trades person. Before beginning maintenance work on the Sure-Grip, there are several cautionary notices that should be considered. If you are not comfortable with the repair or maintenance of this product, please contact your local ATTACH2 Service Department on: (952) 900-5401 (US) / AUS: +61 7 3557 2654 / NZ: +64 6 929 7592

DANGER

Never use hands to search for hydraulic leaks. Escaping fluid under pressure can be invisible and can penetrate the skin and cause serious injury.

WARNING

- › Only fit the Sure-Grip with genuine replacement parts. Quote serial number stamped on the Identification Label when ordering.
- › To ensure that your Sure-Grip works safely to a maximum efficiency, it is imperative that it is properly maintained in accordance with the manual.
- › A defective Sure-Grip could injure you or others. Do not operate a Sure-Grip that is defective.
- › Ensure that hoses aren't loose and don't come into contact with the spring mechanism, preventing safe operation of the blocking bar.

IMPORTANT

OTHER SAFETY REQUIREMENTS

- › Sure-Grip should only be used to perform tasks for which it was designed. Abusing the product and/or using it for purposes for which it was not intended can expose the operator and others to hazards as well as result in damage to the Sure-Grip, carrier and/or other attachments.
- › Modification to the Sure-Grip is done at the owner's risk and may void warranty.
- › The Sure-Grip is designed for a maximum bucket width. Applying the full force of the excavator or backhoe to the corner of a wide bucket (e.g. corner digging with a wide bucket) may cause premature wear and/or reduced equipment life. It is also recommended that the bucket widths are not exceeded.
- › It is the owners responsibility to be sure all safety equipment is in place and operating properly at all times. If safety decals fade, are damaged or become unreadable they should be replaced immediately.

Maintenance Schedule

IMPORTANT

Daily

- Ensure cabin control safety guards are serviceable.
- Ensure operating and maintenance manual is in cabin.
- Test the attachment is safe to operate and all safety features are operational as per the manual.
- Check lifting point for any damage or wear.
- Check attachment hydraulics for leaks and signs of wear.
- Check attachment for signs of damage, wear or cracking.

Weekly

- Check attachment for any signs of cracking.
- Check base and attachments for signs of wear on pin engagement.
- Check attachments for loose bolts/pins.
- Check attachment operation and notify ATTACH2 of any defects found.
- Ensure all safety decals and instructions are clear and legible.

6 Monthly

- Ensure operating and maintenance manuals are in cabin and pre-start check have been documented.
- Check slide wear as per the manual.
- Check base wear as per the manual.

Notes / Remarks

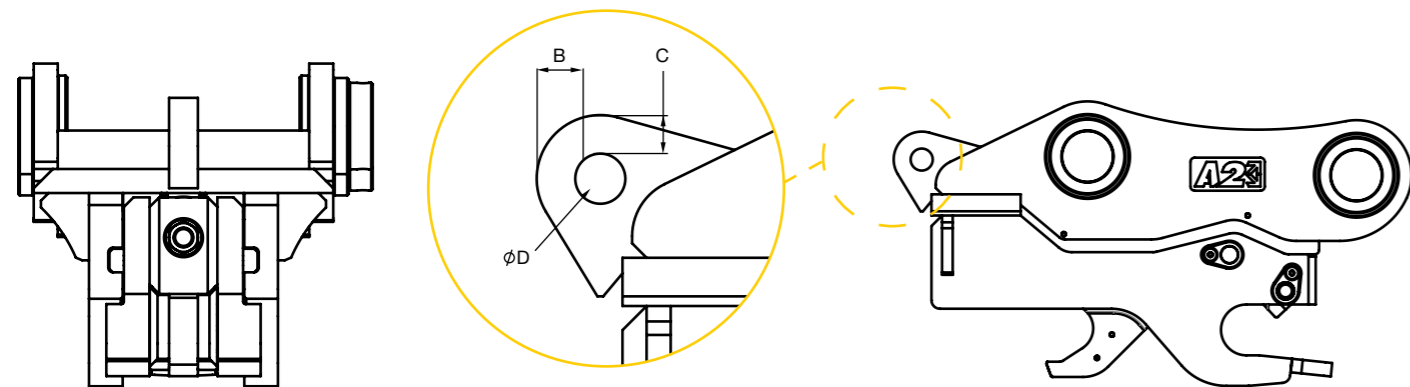
Description:		ATTACH2 Serial Number:	
Machine Make:		Machine Model:	
Company:		Contact:	
Email:		Phone:	
Company:		Trades Person Number:	
Date:		Sign:	
Phone:		Email:	

Lifting Eye Inspection



CHECK DAILY
The Lifting Eye requires visual inspection daily.

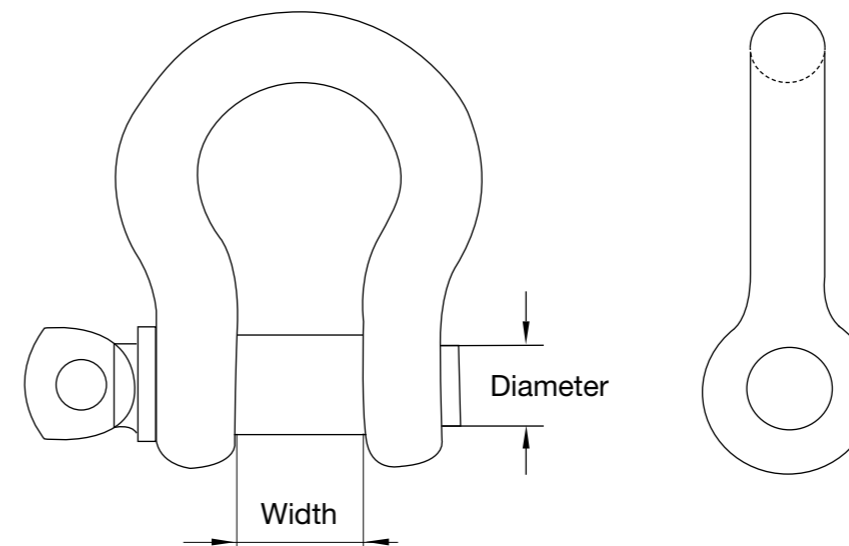
Tonne Range	Minimum Lifting Eye Width (mm)	Minimum Distance To Edge (mm)	Minimum Distance to Edge (mm)	Maximum Lifting Eye Hole (mm)
	A	B	C	D
2T	16	12	12	14.5
3T	20	16	16	20.5
4T	20	16	16	20.5
6T	18	19	19	23.5
8T	23	20.5	20.5	26.5
14T	38	24.5	24.5	32.5
20T	48	28.5	28.5	40.5
35T	56	35.5	35.7	46.5
45T	58	37.5	37.5	54.6



1. Visually check for cracking or deformation - if present.
2. Check for wear on the above chart.
3. Damage to outer surface (A, B, C, D) must be within the measurements in above chart.
4. If the Lifting Eye has exceeded recommended ratings - immediately stop using attachment. Should you find any deformations or cracks anywhere on the Lifting Eye, please contact your local ATTACH2 Service Department on:
US: (952) 900-5401 / AUS: +61 7 3557 2654 / NZ: +64 6 929 7592

Shackle Table

Model	W.L.L	Pin Diameter	Width	Standard
2T	1.00	11	17	AS2741
3T	2.00	16	20	AS2741
4T	2.00	16	22	RR-C-271
	2.00	16	20	AS2741
6T	3.25	19	27	AS2741
	3.25	19	27	RR-C-271
8T	4.25	22	32	AS2741
	4.75	22	31	RR-C-271
14T	8.50	28	43	AS2741
	8.50	28	43	RR-C-271
20T	12.00	35	51	AS2741
35T	12.00	35	51	RR-C-271
	17.00	41	60	AS2741
	17.00	41	60	RR-C-271
	22.00	50	74	RR-C-271



Daily / Weekly Checks

! IMPORTANT !

VISUAL STRESS POINTS CHECK:

- › Visually check the entire Sure-Grip for any cracks, damage and excessive wear.
- › The image below highlights major stress areas, where particular attention should be given during checks.
- › Should you find any cracks, damage or excessive wear, please contact your local ATTACH2 Service Department on: US: (952) 900-5401 / AUS: +61 7 3557 2654 / NZ: +64 6 929 7592

INSIDE OF EAR
TO LAP PLATE

LIFTING EYE

FRONT JAW AND
SAFETY LATCH REGION

HOOK REGION
ON SLIDE



Daily / Weekly Checks

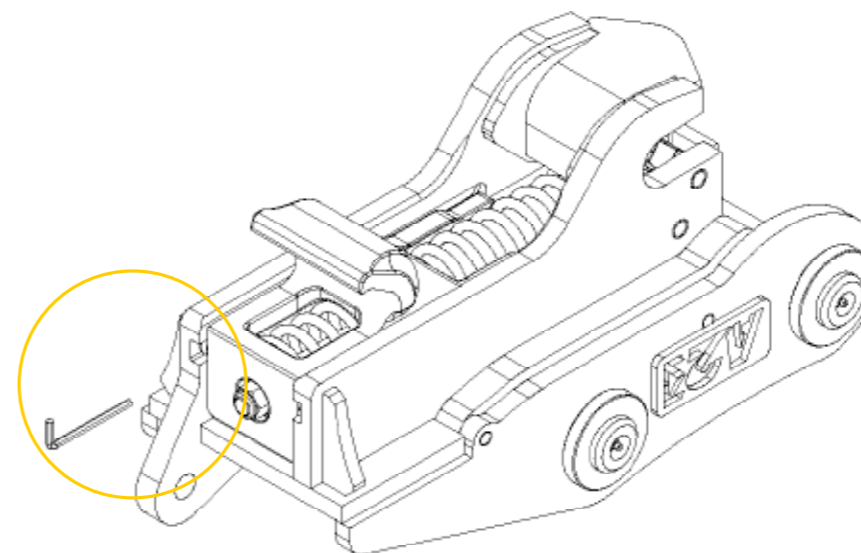
! IMPORTANT !

VISUAL STRESS POINTS CHECK:

- › The slide will have free movement when new. To gauge the wear of the body and slide, place an allen key as shown below to test the space between the slide hook and body.
- › Please see the table below to verify the maximum wear of the body.

GUIDELINE FOR MAXIMUM WEAR

6T, 8T, 14T	5mm
20T, 35T, 45T	7mm



! WARNING !

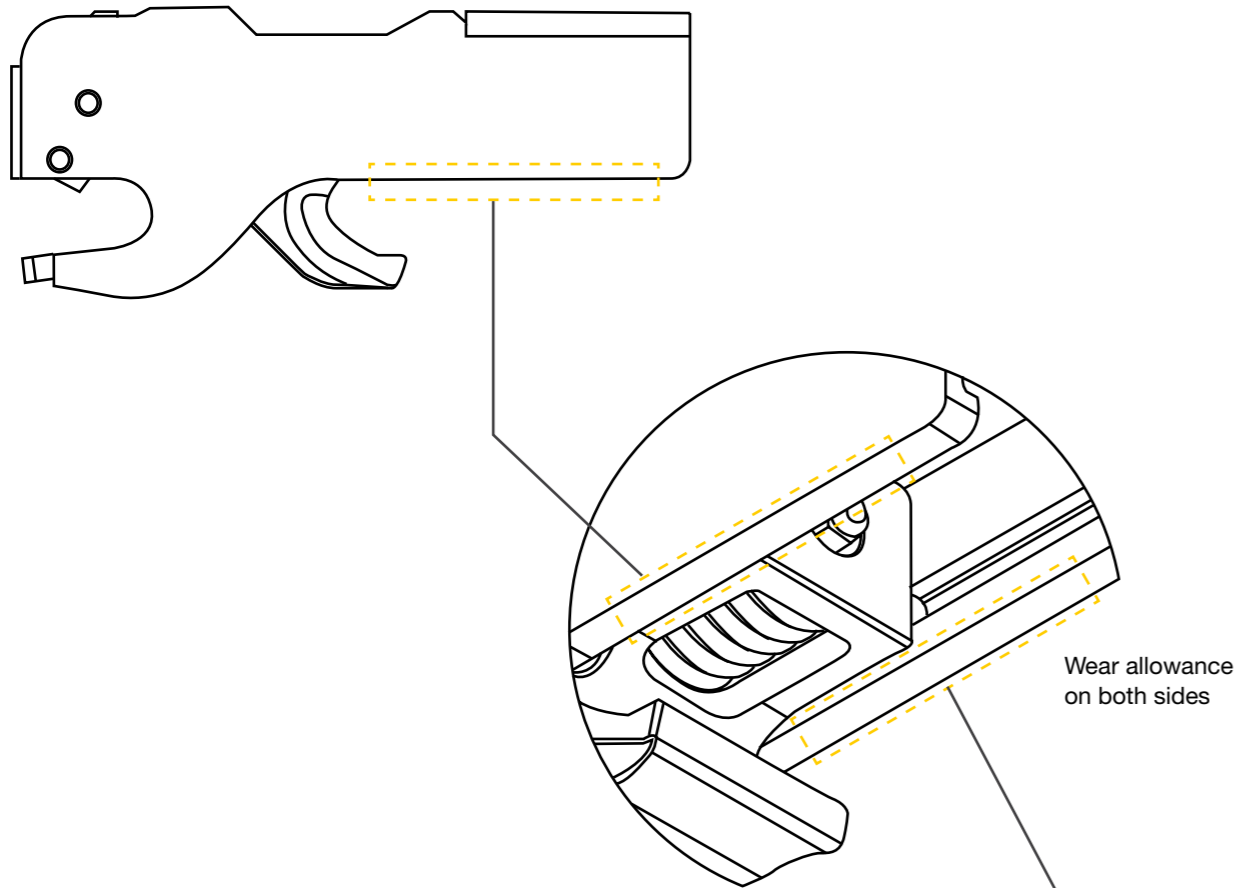
- › If the Sure-Grip base becomes worn or damaged in this area, please contact your local ATTACH2 Service Department immediately on: US (952) 900-5401 / AUS: +61 7 3557 2654 / NZ: +64 6 929 7592

6 Monthly Base Wear Tolerance

WEAR TOLERANCE OF THE SURE-GRIP COUPLER BASE

! IMPORTANT !

5mm Allowable Wear



! WARNING !

If the Sure-Grip base becomes worn or damaged in this area or in excess of 5mm, please contact your local ATTACH2 Service Department immediately on:

USA (952) 900-5401 / AUS: +61 7 3557 2654 / NZ: +64 6 929 7592

Troubleshooting Guide

Sure-Grip

<p>1. Slide will not dis-engage correctly</p> <p>or</p> <p>Slide will not engage correctly.</p>	<p>1.1 Install pressures not at specification.</p> <p>1.2 Damaged base jamming slide operation.</p> <p>1.3 Slide Jamming in rail.</p> <p>1.4 Check cylinder pilot operated check valve.</p>	<p>1.1 Check and adjust pressures. Ensure installation is as per the ATTACH2 manual.</p> <p>1.2 Check base for damage interfering with sliding action. Repairs as required to allow free movement of the slide.</p> <p>1.3 Check rail tolerance as per the ATTACH2 manual, excessive movement in rail may cause the slide to jam.</p> <p>1.4 Check cylinder pilot operated valve may require replacement; even small amount of foreign material can cause the check valve to fault. If the fault remains, please contact your ATTACH2 service department on:</p> <p>US: (952) 900-5401 AUS: +61 7 3557 2654 NZ: +64 6 929 7592</p>
<p>2. Hitch will not fit attachments.</p>	<p>2.1 Incorrect attachments</p> <ul style="list-style-type: none"> • Pin sizes • Pin centres <p>• Between the ears measurements</p> <p>2.1 Incorrect hitch build specification.</p>	<p>2.1 Check attachment pin sizes and centres are within the range on the hitch serial plate. As per checking attachment section in the ATTACH2 manual.</p> <p>2.2 Contact ATTACH2 with hitch serial number to confirm ordered build specifications.</p> <p>NOTE: Hybrid hitches have differing top specification and differing bottom specification and will be built as ordered. Loan units are extremely rare for Hybrid builds.</p>

Troubleshooting Guide

Sure-Grip

<p>3. Attachment engagement is loose</p>	<p>3.1 Attachment may not suit the coupler specification.</p> <p>3.2 Install pressures not at specification.</p> <p>3.3 Special pickup may require modified coupler slide.</p> <p>3.4 Check C-section, Base and Slide for damages, wear or defects.</p>	<p>3.1 Check attachment pin sizes and centres are within the range on the hitch serial plate. As per Checking attachment section in the ATTACH2 manual.</p> <p>3.2 Check for installation for low pressures or pressure drop.</p> <p>Check installation flow is set as per the ATTACH2 manual.</p> <p>Check installation hose sizes are as per the ATTACH2 manual.</p> <p>Inspect installation valves are seating correctly or for damage/foreign material, replace with new if required.</p> <p>Check installation is set to correct specification as per the ATTACH2 Manual. Adjust or replace if required.</p> <p>Ensure installation solenoids and electrical circuits are serviceable. Adjust or replace components if required.</p> <p>If the fault remains, please contact your ATTACH2 service department.</p> <p>If the attachment is within the serial plate specification and is still loose, the hitch may be a hybrid and require a special modified slide. Please contact your ATTACH2 service department</p> <p>3.4 Complete visual and maintenance checks as per the ATTACH2 manual. If the fault remains, please contact your ATTACH2 service department on: AUS: +61 7 3557 2654 NZ: +64 6 929 7592 US: (952) 900-5401</p>
<p>4. Safety Latch stuck open or closed.</p>	<p>4.1 Damaged or cracked safety latch.</p> <p>4.2 Foreign material is jamming spring operation.</p> <p>4.3 Safety latch springs damaged.</p> <p>4.4 Damage / snapped Slide tail section.</p>	<p>4.1 Check Safety latch for damages and replace.</p> <p>NOTE: Forcing the attachment pin over the safety latch will cause wear and damages to the safety latch. See Operating and attaching in the ATTACH2 manual.</p> <p>4.2 Clean all foreign materials from behind the safety latch and springs to ensure clear and free operation.</p> <p>4.3 Replace broken or worn springs to allow correct operation.</p> <p>4.4 Replace slide - When fully retracted the slide tail section mechanically opens the safety latch.</p>

Troubleshooting Guide

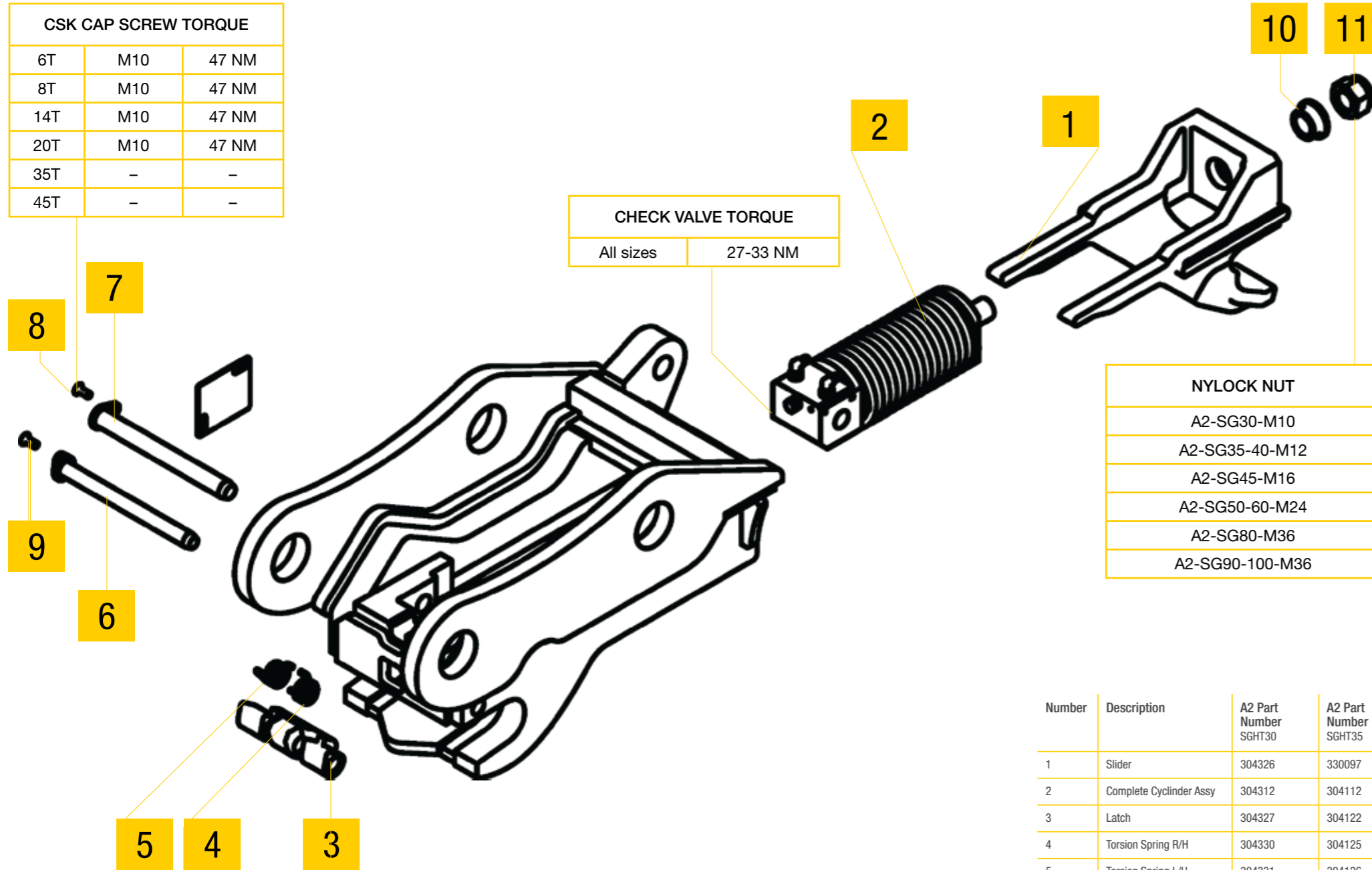
Sure-Grip

<p>5. Wear/ Defects on base.</p>	<p>5.1 Damages due to external operational contact.</p> <p>5.2 Wear on pin contact area.</p>	<p>5.1 Contact ATTACH2 for repair instructions if required. Please contact your ATTACH2 service contact. department.</p> <p>5.2 Check wear tolerance specification as per the ATTACH2 manual. Contact ATTACH2 for repair instructions if required. Please contact your ATTACH2 service department on: AUS: +61 7 3557 2654 NZ: +64 6 929 7592 US: (952) 900-5401</p> <p>NOTE: Hardened attachment pins or high tensile pins may wear into base, after initial wear in periods the base wear normally will not develop any further.</p>
<p>6. Damage / Wear / Defects on slide rail.</p>	<p>6.1 Damages due to external operational contact.</p> <p>6.2 Wear on rail slide area.</p>	<p>6.1 Please contact ATTACH2 service department for repair instructions.</p> <p>6.2 Check rail wear tolerance specification as per the ATTACH2 manual. Please contact ATTACH2service department for repair instructions if required on: AUS: +61 7 3557 2654 NZ: +64 6 929 7592 US: (952) 900-5401</p>
<p>7. Damage / Wear / Defects on C-Section.</p>	<p>7.1 Damages due to external contact.</p> <p>7.2 C-Section pulled open due to misuse.</p>	<p>7.1 Contact ATTACH2 for repair instructions if required. Please contact your ATTACH2 service department.</p> <p>7.2 A misused C-Section can cause loose attachment engagement and increase wear to pin engagement surfaces. Please contact your ATTACH2 service department on: AUS: +61 7 3557 2654 NZ: +64 6 929 7592 US: (952) 900-5401</p>

Parts List & Parts Diagram

CSK CAP SCREW TORQUE		
6T	M10	47 NM
8T	M10	47 NM
14T	M10	47 NM
20T	M10	47 NM
35T	-	-
45T	-	-

CHECK VALVE TORQUE	
All sizes	27-33 NM



NYLOCK NUT	
A2-SG30-M10	
A2-SG35-40-M12	
A2-SG45-M16	
A2-SG50-60-M24	
A2-SG80-M36	
A2-SG90-100-M36	

Number	Description	A2 Part Number SGHT30	A2 Part Number SGHT35	A2 Part Number SGHT40	A2 Part Number SGHT45	A2 Part Number SGHT50-60	A2 Part Number SGHT65	A2 Part Number SGHT80	A2 Part Number SGHT90-100
1	Slider	304326	330097	304121	303850	302287	304198	304199	304636
2	Complete Cylinder Assy	304312	304112	304112	303207	304019	303821	303521	304212
3	Latch	304327	304122	304122	303217	304021	303838	303538	304236
4	Torsion Spring R/H	304330	304125	304125	303205	303839	303839	303539	304224
5	Torsion Spring L/H	304331	304126	304126	303206	303840	303840	303540	304225
6	Latch Pin	304333	304123	304123	303214	304024	303170	303542	304237
7	Cylinder Pin	10170	304128	304128	303214	304022	303837	303547	304220
8	Countersunk Screw Zinc	20392	303220	303220	20189	20189	20189	20189	20189
9	Countersunk Screw Zinc	20392	20189	20189	20189	20189	20189	20189	20189
10	Boss	304332	305127	305127	203115	303826	303826	3030226	3030226
11	Nut Nylock	20265	20266	20266	20268	20271	20271	303541	303541



WE GET YOU WORKING FASTER.



**WE'RE COMMITTED TO
MAKING BACK-UP AND
SUPPORT OUR
#1 PRIORITY.**

CONTACT US TODAY.

ATTACH2 USA

8415 220th St,
Lakeville, MN 55044,
United States of America
T: (952) 224-4430
E: Sales.usa@attach2.com
www.attach2.com

ATTACH2 NEW ZEALAND

PO Box 905
Masterton, 5791
New Zealand
T: +64 6 929 7592
E: sales@attach2.com
www.attach2.com
FREEPHONE 0800 100 683

ATTACH2 BRISBANE

198 Paradise Road,
Willawong, QLD 4110
Australia
T: +61 7 3557 2654
E: sales@attach2.com
www.attach2.com
FREEPHONE: 1800 095 689

ATTACH2 MELBOURNE

Factory 1, 6 Johnston Ct,
Dandenong South, VIC 3175,
Melbourne, Australia
T: +61 7 3557 2654
E: sales@attach2.com
www.attach2.com
FREEPHONE 1800 095 689

ATTACH2 SYDNEY

37-38 Cassola Place,
Penrith, Sydney,
NSW 2750, Australia
T: +61 7 3557 2654
E: sales@attach2.com
www.attach2.com
FREEPHONE 1800 095 689

